



BT-GIGAFLASH

Référence: B04714

990,00 € inc. VAT



Extremely powerful LED strobe with 9 separately controllable segments and a light output of +/-100,000 lm.

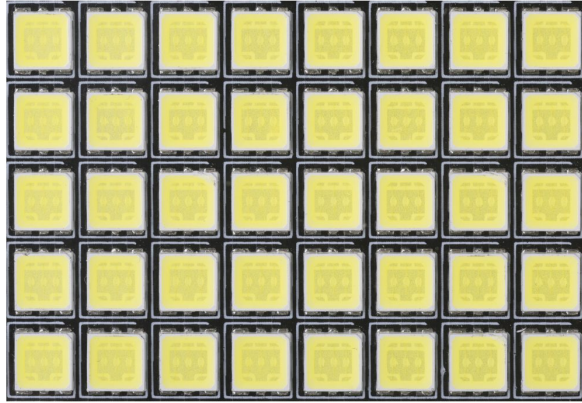
- Extremely powerful LED strobe with 9 separately controllable segments!
- 1260 strobe LEDs for exceptional light output of +/- 100,000 lm
- **Long-term blinder function** with automatic fade function
- **Stunning** built-in **random pixel strobe effects**, no programming required.
- Full DMX control with :
 - 7 different channel modes for strobe effects (1 channel to 13 channels)
 - 3 different pixel control modes (1 channel to 9 channels)
- LCD display for easy navigation through the configuration menus
- The two-leaf barn door with bright internal reflector increases the light output and protects the unit during transport.
- Can be used as a wash light with reduced power (*e.g. to illuminate the stage during the technical set-up of a concert*)
- Television studio loan:
 - Natural White: 4500K with CRI > 90
 - Flicker-free LED refresh rate 2000 Hz
- Quiet cooling system
- Compact and robust ALU housing with tempered glass in front of the LEDs, perfect for rental companies!
- Solid suspension hook, prepared for quick installation with omega clamps.
- In case of DMX failure, the "all off" or "hold" modes will remain available.
- Lock function to prevent unwanted configuration changes.
- The factory default settings can be loaded.
- XLR 3 / 5 pin inputs/outputs and power supply for easy daisy-chaining of multiple devices up to 16A.
- Power supply with active PFC.

Caractéristiques

Brand	Briteq
Controllable colours	Natural white
Protection class	IP20

Galerie photos





www.hitmusic.eu/en/