



CLAMP BASE GEN2

Référence: B06602

5,30 € inc. VAT



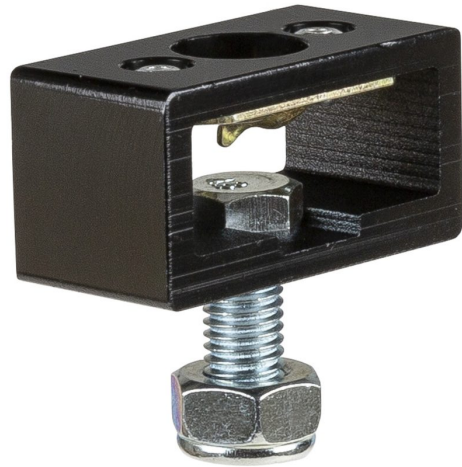
Base for use with "FAST CLAMP GEN2

- This base is permanently attached to the projector support.
- The "FAST CLAMP GEN2" can then be installed in a flash.
- M10 screw and nylstop nut included to fix any suitable support.
- Always use with the "FAST CLAMP GEN2" (order code: B06601).
- SAVE SPACE! (a smaller flight case can be used!)
- SAVE TIME! (VERY fast installation)
- Maximum load: 100kg
- **Protected and registered model (model patent n°00620454525-0001)**

Caractéristiques

Brand	Briteq
SWL	100 kg
Truss	Baseplate

Galerie photos



Type Approved
Safety
Regular Production
Surveillance

www.tuv.com
ID 1419076779



www.hitmusic.eu/en/