

## LD-1024DIN

Référence: B05013

329,00 € inc. VAT



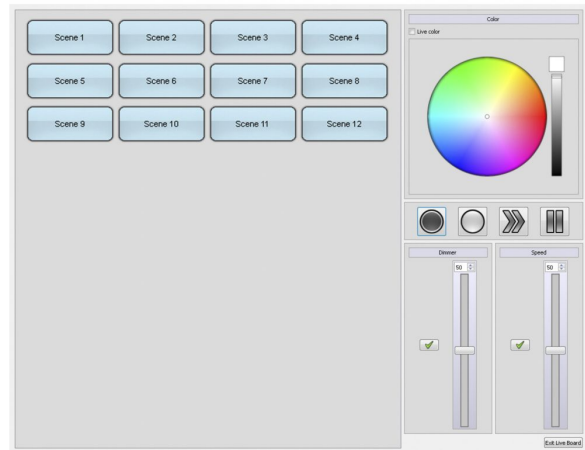
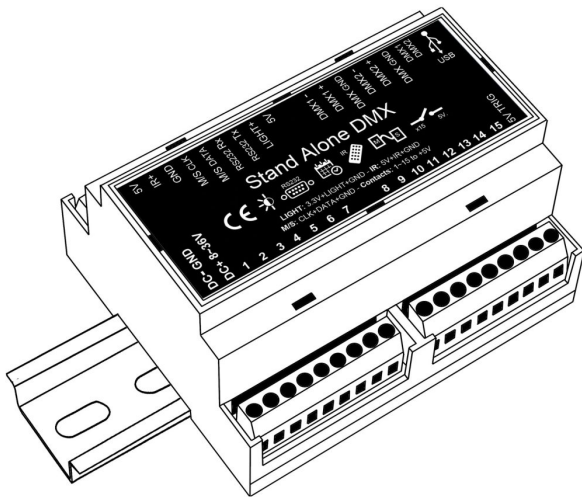
1024 Channel DMX interface that can be easily mounted on a DIN Rail.

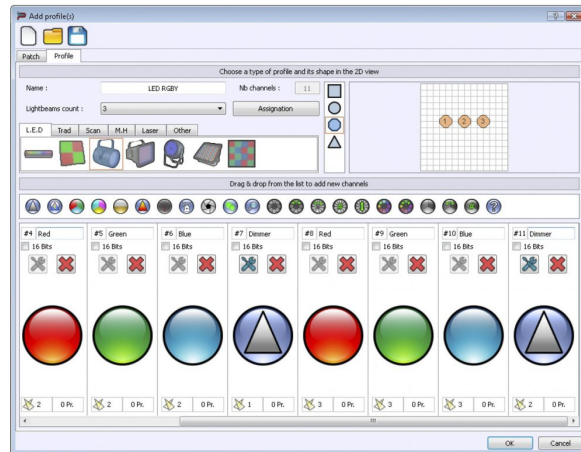
- 1024 Channel DMX interface that can be easily mounted on a DIN Rail
  - 1024 output channels when used with a computer
  - 1024 output channels when used standalone without computer
- Chromateq Led Player and Chromateq Pro DMX software (limited mode, 100 ch.) included
- Windows, MAC Os X (10.6 and +) and Linux (64) compatible
- Perfect for fixed installations: all the programs can be created via computer and stored into the interface. Once this is done, you can activate your programs via external switches or via the optional Infra-Red remote controller set.
- Functions and control in standalone mode:
  - Automatic Real Time Clock triggering for different scenes (day, week, month, year)
  - 15 contact triggers to 5V (On, On/Off, Release or Restart scenes)
  - Splitter mode 2x512 out
  - DMX in triggers in Stand Alone
  - DMX merging signal in Stand Alone (in/out mode)
  - 16 bits and fine channel management
  - Cross Fade time between scenes
  - 4 Mb of internal memory (min. capacity: 6,000 steps/512 ch)
- An optional external infra-red receiver can be connected to the unit (LD-512Kit-IR = IR receiver + 2 remote controllers)
- Master/Slave mode to interconnect and synchronize up to 32 interfaces in Stand Alone (32768 dmx channels without pc use)
- Mini USB 2.0 (Input - 5V. DC)
- DC Power input of 9 to 36V.
- DIN-RAIL housing (All DIN cabinet compatible (Easy install)
- Screw terminals for all external connections (Easy connect)
- Automatic Scene Recovery if the power is accidentally cut off
- For more information about the software: [www.chromateq.com](http://www.chromateq.com)

## Caractéristiques

<b>Brand</b>	Briteq
<b>Protocole</b>	DMX

## Galerie photos





[www.hitmusic.eu/en/](http://www.hitmusic.eu/en/)