



## **LD-512EASY+**

Référence: B05012

**329,00 € inc. VAT**



512 Channel DMX interface (2x512 in splitter mode).

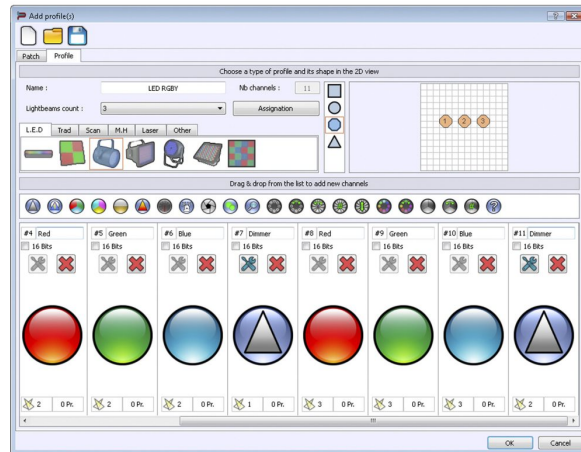
- 512 Channel DMX interface
  - 512 output channels when used with a computer
  - 512 output channels when used standalone without computer (max 6000 steps and 512 scenes max when 512 channels are used)
- 4Mb internal memory and external SD Card reader (extended memory for all type of Micro SD card)
- 16 bits channels management in standalone
- RS232 triggers standaloneDMX
- input trigger standalone
- 30 minutes of Lighting, Audio and Video timeline synchronization with Pro DMX software
- Integrated DMX splitter (2 outputs)
- Works with the Chromateq Led Player and Chromateq Pro DMX software. (included)
- Perfect for fixed installations or rental: Create your programs with the computer and store them into the interface. Once this is done, you can use the unit without computer and use the control buttons to activate your programs.
- Functions and control in standalone mode:
  - Automatic Real Time Clock triggering for different scenes (day, week, month, year)
  - External Triggering via 7 contacts
  - Select one of your 80 programs (max) via the 8 switch buttons x 10 selectable pages
  - Program selection via the NEXT and PREVIOUS buttons
  - General dimmer adjustment
  - Speed adjustment of the programs
  - Manual color selection of your customized colors via the 8 trigger buttons
  - Manual color selection of 100 standard colors via the + and - buttons
  - Master/Slave mode for up to 32 interfaces connected together
  - 4Mb internal memory + SD card slot for memory extension
- 3-pin XLR connectors
- Power supply for the use in standalone mode: 9V to 36V via DC connectors, 5V via USB connector (optional)
- An optional external infra-red receiver can be connected to the unit (LD-512Kit-IR = IR receiver + 2 remote controllers)
- For more information about the software: [www.chromateq.com](http://www.chromateq.com)

## Caractéristiques

|                  |                    |
|------------------|--------------------|
| <b>Brand</b>     | Briteq             |
| <b>Protocole</b> | Art-Net, DMX, MIDI |

## Galerie photos





[www.hitmusic.eu/en/](http://www.hitmusic.eu/en/)