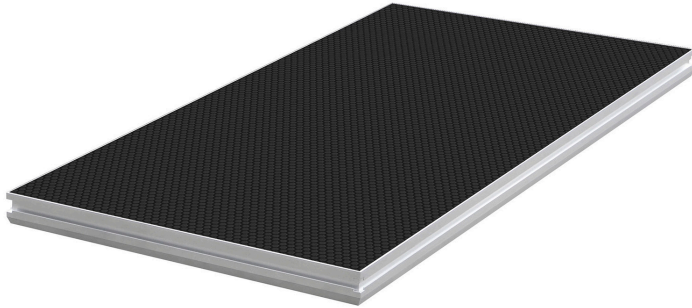
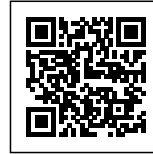


PLTS-2X1

499,00 € inc. VAT

Platform 2 x 1 m anti-slip 750 kg/m².

Delivered without feet



SKU: H10369

Categories: [Platforms for STAGE platforms](#)

EAN13 : 3662009014456

brand ConteStage

PLATFORMS STAGE

Thanks to their structure, the platforms can be used both indoors and outdoors. The top of the platform is made of water-resistant plywood with a non-slip coating.

Compatible with 3 types of feet

The platforms can be supported by round, square or telescopic legs that allow for smooth and precise height adjustment. The rubber feet of the platforms ensure stability.

Features of PLTS-2x1

Material	Frame: Aluminum Top: 12 mm plywood with anti-slip coating
Dimensions	2 m x 1 m
Thickness	90 mm
Distributed load eligible	750 kg/m ² .
Finish	Aluminum / Black
Weight	32 kg

About security

In accordance with the NF E85-015 standard:

- A maximum height of 150 cm is allowed
 - A guardrail must be installed if the height to be climbed is greater than 50 cm.
- These provisions are not exhaustive. For other requirements, please refer to the standard mentioned above.

Attention to soil capacity:

A loose floor can affect the safety of the installation.
Please distribute the loads evenly over the entire platform surface.

About railings and stairs:

A guardrail must be installed as soon as the height of fall is higher than 50 cm.
A staircase less than or equal to 120 cm wide must have at least one handrail.

Resistance

Fire resistance :

Fire resistance class: BFL-S1 (corresponds to the French M1 class).
It complies with the European standard EN13501-1+A1:2010

Resistance Water resistance :

The top is made of birch multi-ply plywood filmed underneath and covered with a non-slip coating on top.

It is designed to withstand water splashes, so it can withstand the occasional rain.

It should not be immersed and installed for a long period of time or stored outdoors as it may swell and reduce the load capacity.

INFORMATIONS COMPLÉMENTAIRES

Brand	ConteStage
Dimensions	2 x 1 m

GALERIE D'IMAGES

