



## **LD-1024WALL+**

Référence: B05017

**389,00 € TTC**



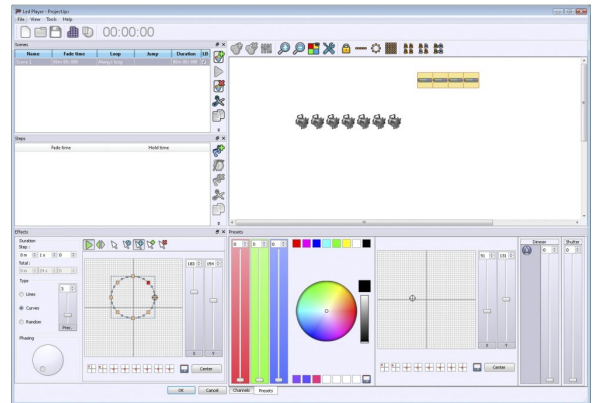
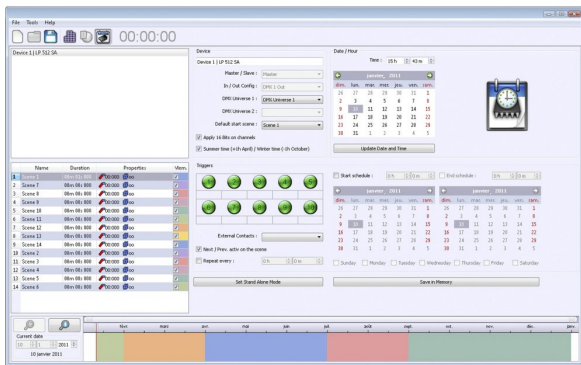
1024 Channel DMX interface for fixed architectural purposes.

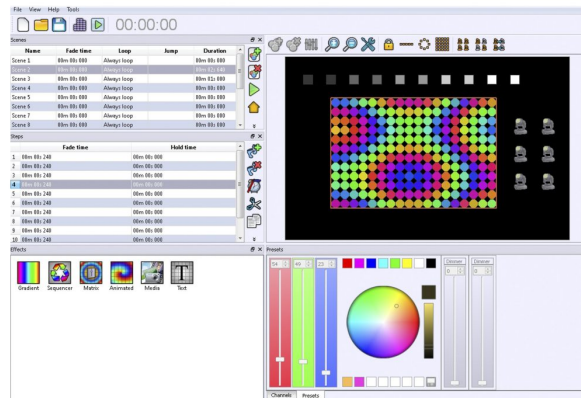
- 1024 (2x 512) Channel DMX interface for fixed architectural purposes
- Can easily be mounted on walls of any surface.
- All the connections are on inside the back panel so no wires are visible.
- Nice white finish with blue display and blue led buttons for the activated functions
- Works with the Chromateq Led Player software. (included)
- All the necessary programs can be created via computer and stored into the interface. Once this is done, you only have to press the buttons to activate your programs.
- Standalone functions:
  - Direct access via the trigger buttons for: Scene, Page, Color, Speed , Dimmer
  - **Multiple Zone control: 5 programs can run simultaneously !**
  - 8 trigger buttons to recall max. 80 programmed scenes (8 buttons x 10 pages)
  - Direct access to 8 custom colors (or scroll 100 preprogrammed colors via the up & down buttons)
  - Speed and dimmer adjustment for each scene
  - Automatic Real Time Clock triggering for different scenes (day, week, month, year)
  - Automatic scene recovery when the if the power was accidentally cut off
  - External Triggering up to 31 contacts (mutiplexed)
  - Master/Slave mode for up to 32 interfaces connected together
- USB cable included
- An optional external infra-red receiver can be connected to the unit (LD-512Kit-IR = IR receiver + 2 remote controllers)
- For more information about the software: [www.chromateq.com](http://www.chromateq.com)

## Caractéristiques

<b>Marque</b>	Briteq
<b>Protocole</b>	DMX

# Galerie photos





[www.hitmusic.eu](http://www.hitmusic.eu)